

Southern Railway  
CHARLOTTE DIVISION.

PROPERTY TO BE ACQUIRED FROM

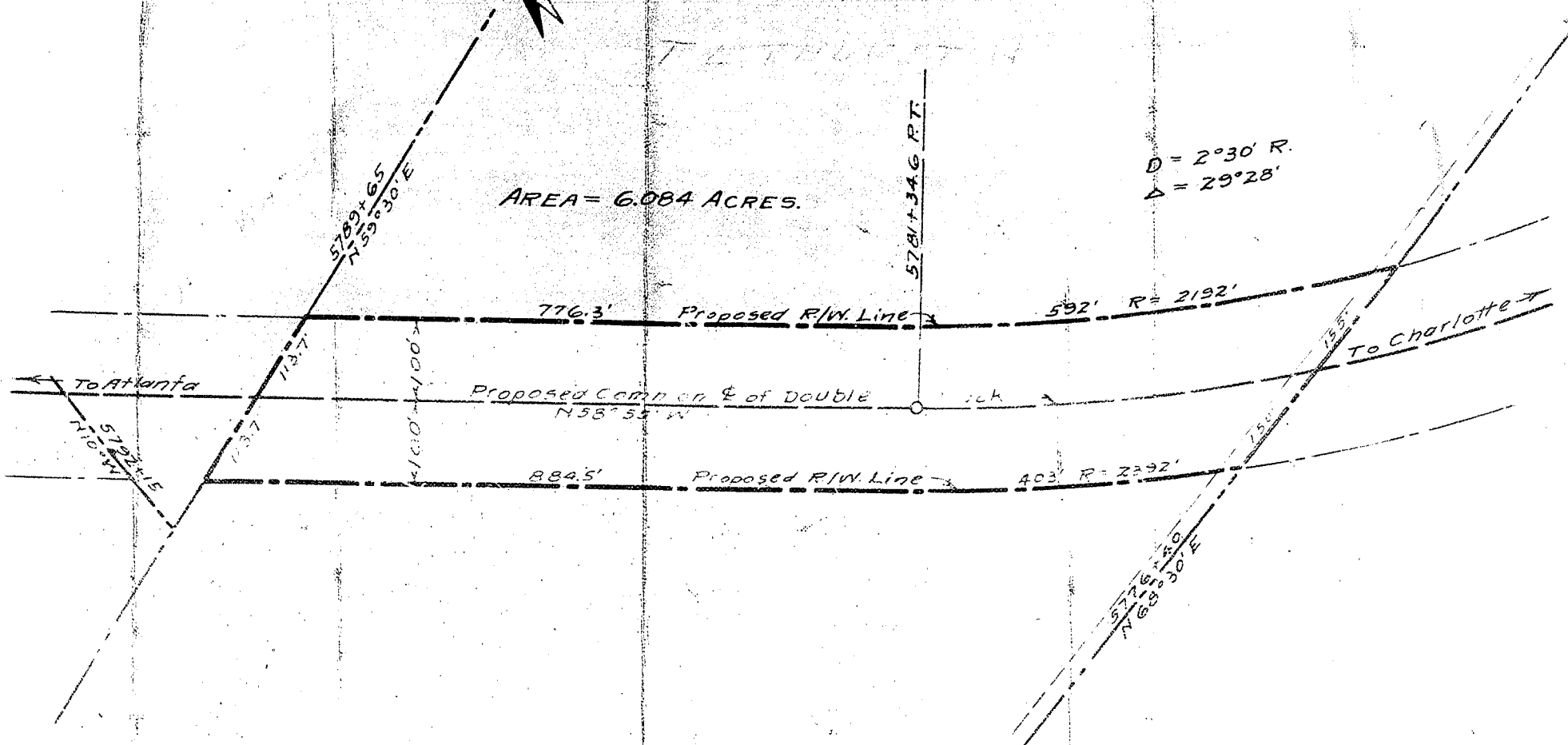
Greenville County, S.C.

For Spartanburg Jct. - Central Double Track.

Scale: 1" = 200'  
 Feb. 23, 1915.

R. F. Ezzell, P.A.E.  
 W. O. Dyer, A.E.

Office of  
 Principal Assistant Engineer,  
 Charlotte, N.C.



AREA = 6.084 ACRES.